



Ron Gerstel
Product Sales Manager

Protecting your
people, operations
and reputation

A wide-angle photograph of an industrial facility, likely a refinery or chemical plant, captured during sunset. The sky is a mix of orange, yellow, and dark blue. The facility features numerous tall distillation columns, storage tanks, and complex piping. In the foreground, several large, white, cylindrical storage tanks are visible, some with blue tarps covering parts of them. The scene is illuminated by the warm light of the setting sun and some artificial lights from the facility.

*Emergency plans based on scientific
models, live data and AI tools*

Wed, 13 May, 14:30 - 15:00,
Room 3, Van der Valk Hotel, Dordrecht

11th Dordrecht Process Safety Congress



We are the trusted safety and risk management partner for the world's leading industries.

We solve your challenges and specific needs using our deep technical knowledge, deployed through a combination of expert consulting, state-of-the-art software and comprehensive testing services.

Committed to protecting people and safeguarding assets, our integrated approach focuses on creating value, reducing costs and preserving reputation.

We give you the intelligence to prevent disasters before they happen.

With our software solutions we safeguard people, critical assets and the environment. By helping organizations understand, quantify, and mitigate hazards related to fires, explosions, and toxic releases.

Headquartered in Norway. Present across Europe, the Americas, Middle East, and Asia.

50+ years Research

Built on more than 50 years of explosion, fire and dispersion science

€80M+ Investment

More than €80 million invested in research, development and testing of our software and models.

1,000+ Validation Cases

Benchmarked against over 1,000 validation cases, incl. large-scale experiments and real-world incidents e.g., Buncefield, Piper Alpha and TWA 800, and industry JIPs.

1,000+ Customers

Used by more than 1,000 customers across oil and gas, chemicals, manufacturing and the energy transition.

One connected platform. Physics at the foundation.

Physics

FLACS · EFFECTS ·

Technical safety, process engineering

CFD and validated engineering models for explosion, fire, dispersion and toxic release.



Risk

RISKCURVES

Process safety, QRA specialists

Consequence and lethality footprints translated into quantifiable risk metric.



Operations

EROMS · Evolution XR · EX-Compliance

Operations managers, site teams, asset integrity

Operational governance connected to consequence science
Immersive training



FLACS

Industry-leading CFD software for in-depth dispersion, explosion and fire modelling



Detailed geometrical effects of scenarios



Excellent 3D visualisations



Validation based on real life testing



Efficient set up of simulations



EFFECTS

Fast running models to rapidly determine the consequence of hazardous scenarios



Easy to use



Cost effective



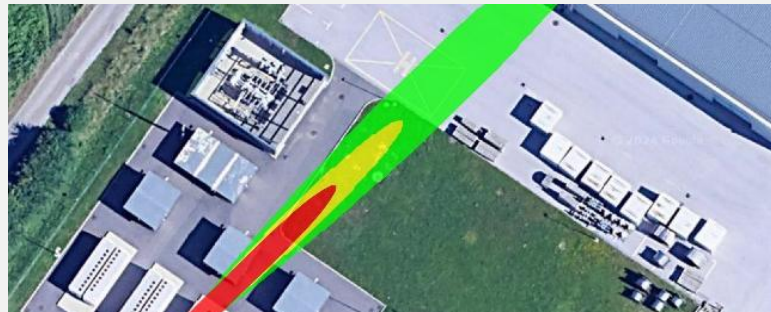
Advanced scenarios



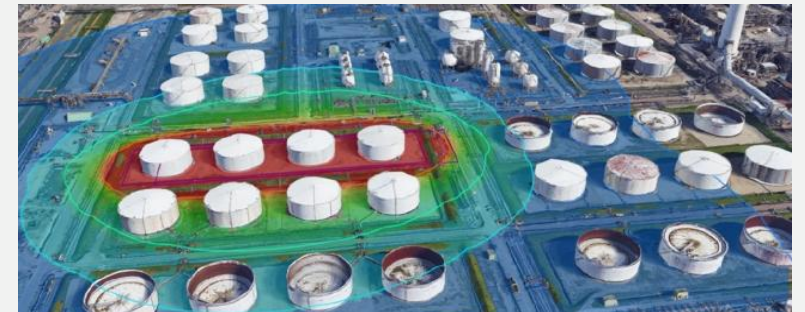
Results you can share



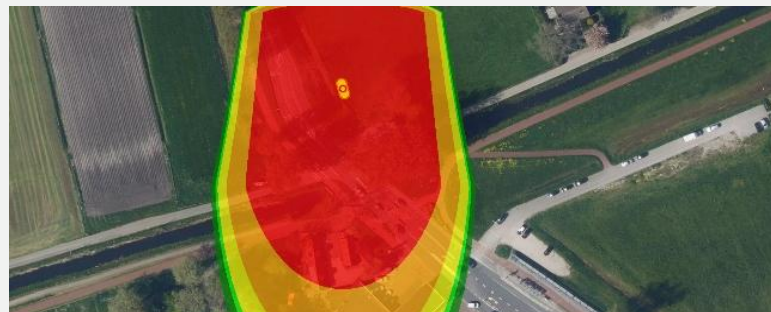
Reliable calculations



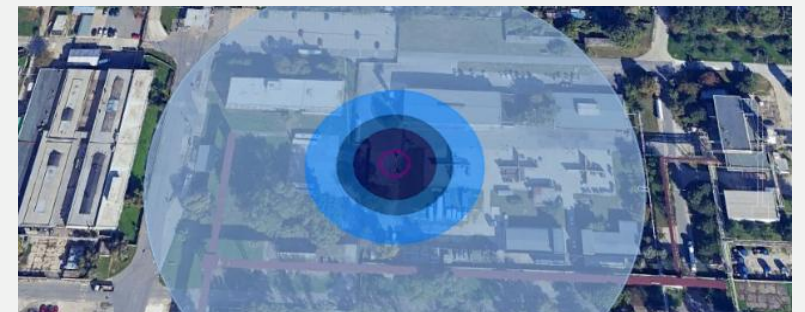
Simulating toxic release from a BESS thermal runaway



Presenting pool fire result in Google Earth



Simulating liquefied CO2 leak after a buried pipeline rupture



Simulating Hydrogen gas fireball



A complete and
open QRA suite



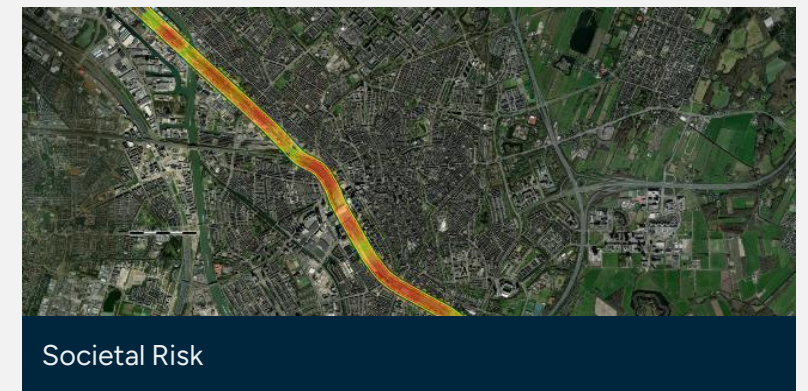
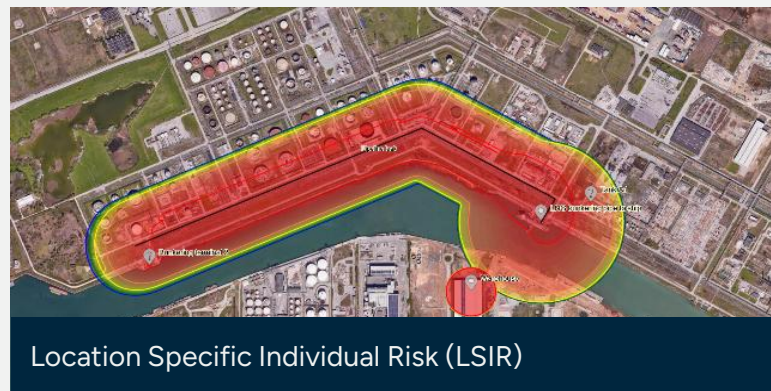
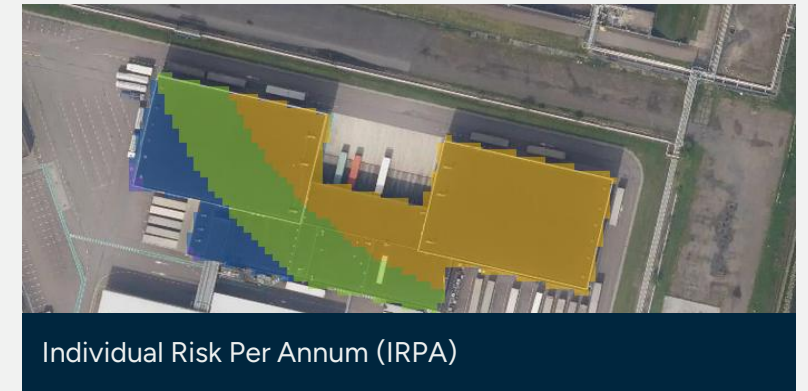
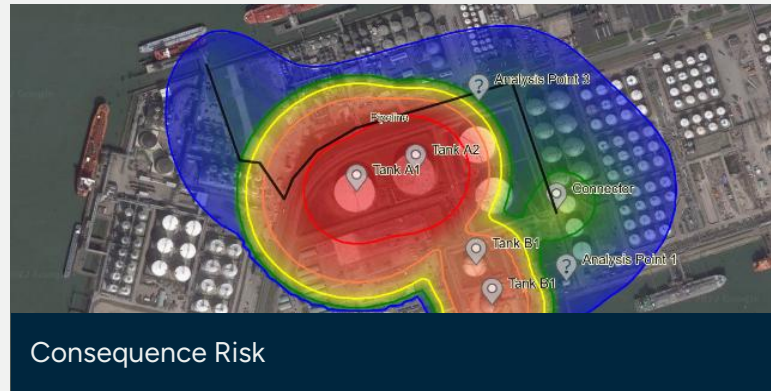
Comprehensive result
presentation



Available with societal
risk map



Transparency and
traceability

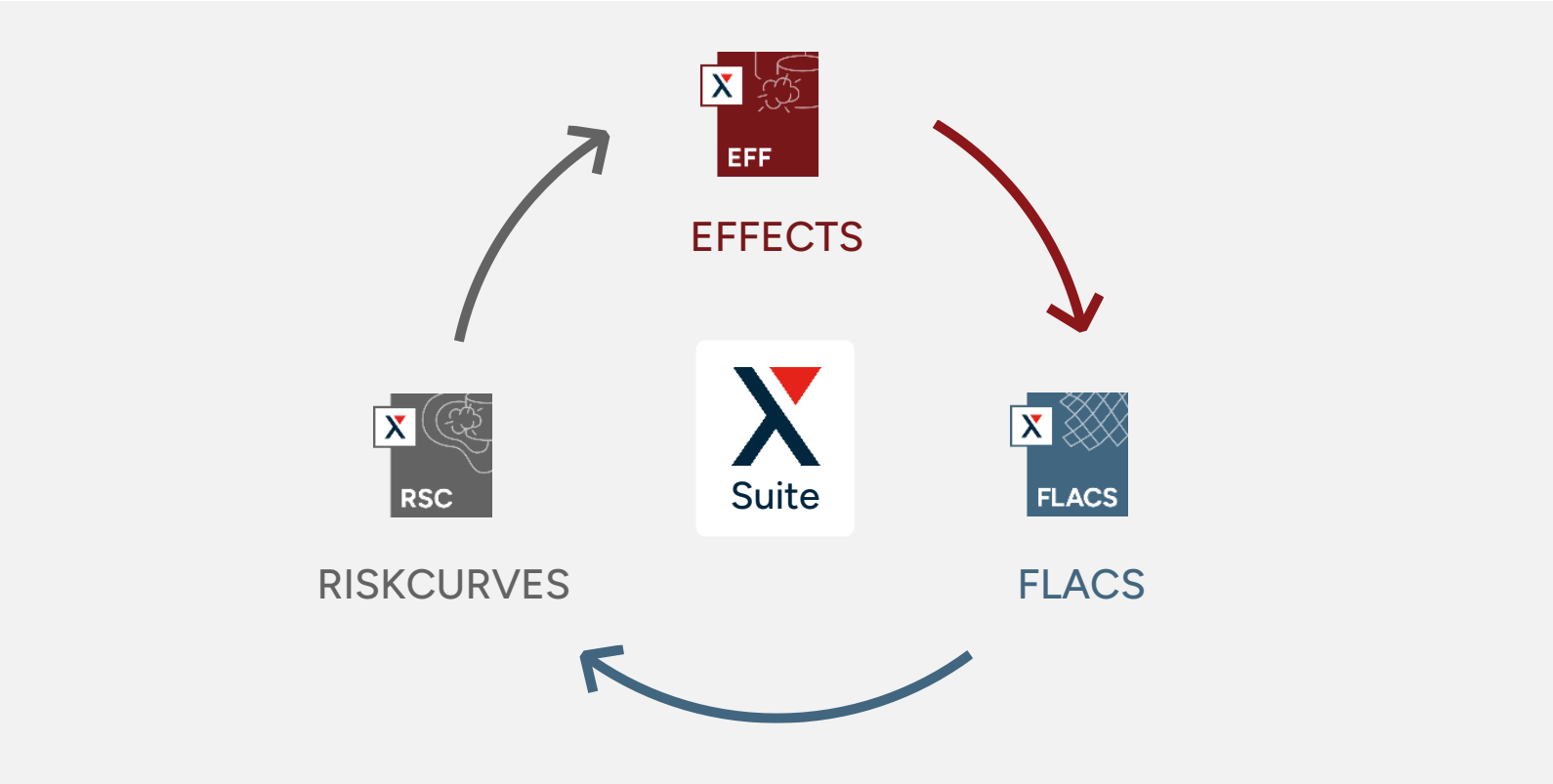


X-Suite

All-in one solution for safety and risk management

Integrated safety and risk management solutions for complex challenges.

The X-Suite delivers advanced modelling and risk assessment capabilities, designed to work together across every project phase to enhance decision-making and safety outcomes.



Hybrid approach for consequence modelling and QRAs

GEXCON

Integrating FLACS-CFD, EFFECTS, and
RISKCURVES for hybrid risk modelling

EROMS

Emergency preparedness and operational risk management

- *Gexcon acquired UK-based Evolution Risk Assurance in January 2026:*

Linking advanced consequence and risk modeling with emergency response planning.



Centralised emergency planning and response management



Access critical information anytime, anywhere



Real-time updates for faster, coordinated decisions



Support safety, compliance, training, and operational assurance



Improve efficiency across operations and asset management



Links to movies/information of Eroms showed during conference

- *Overview maps:* <https://youtu.be/Gw-CpWFinkQ>
- *Gap Analysis:* <https://youtu.be/Uyo5-2fqcsU>
- *Dynamic Plans / Asset Manager:* <https://youtu.be/uAg05URgu4Y>
- *Response:* <https://youtu.be/75hHp8m432w>
- *Static Planning (Planning Docs):* <https://youtu.be/6-uXJnWGrAl>
- *Mixed reality learning and development:* <https://www.evolution-xr.com/>

Questions?

Contact us

effects@gexcon.com
riskcurves@gexcon.com

