

A large iceberg floating in the ocean, with a significant portion submerged below the waterline. The scene is set against a blue sky and sea, with sunlight filtering through the water. The iceberg's surface is jagged and textured, while the submerged part is much larger and more complex in shape, illustrating the concept of hidden risks or insights.

Research Results Cross Site Learning Process Safety

André de Rooij | Coen van Driel | Chris Williams

2023


new behavior
large scale change

Our motivation for this project

- We care to make a difference to Process Safety
- Leaders we work with feel performance improvement has reached a plateau
- They tell us Process Safety Indicators have improved and fewer incidents happen
- Nevertheless organizations are still caught by surprise with serious incidents
- We believe we have found opportunities to make organizations more resilient
- Cross site learning offers a critical reflection from outside
- We wanted to understand what organizations are doing to intra- or inter organizational learning
- And what they need to get better in that

Contents

- 1 Research findings
- 2 Benefits from using the intervention map
- 3 Join the next steps and participate in the community of practice

Contents

- 1 Research findings
- 2 Benefits from using the intervention map
- 3 Join the next steps and participate in the community of practice

Research results

The Result of this research project is an intervention map

- 7 themes of process safety
- Most interesting topics per theme
- Key questions of leaders in the field

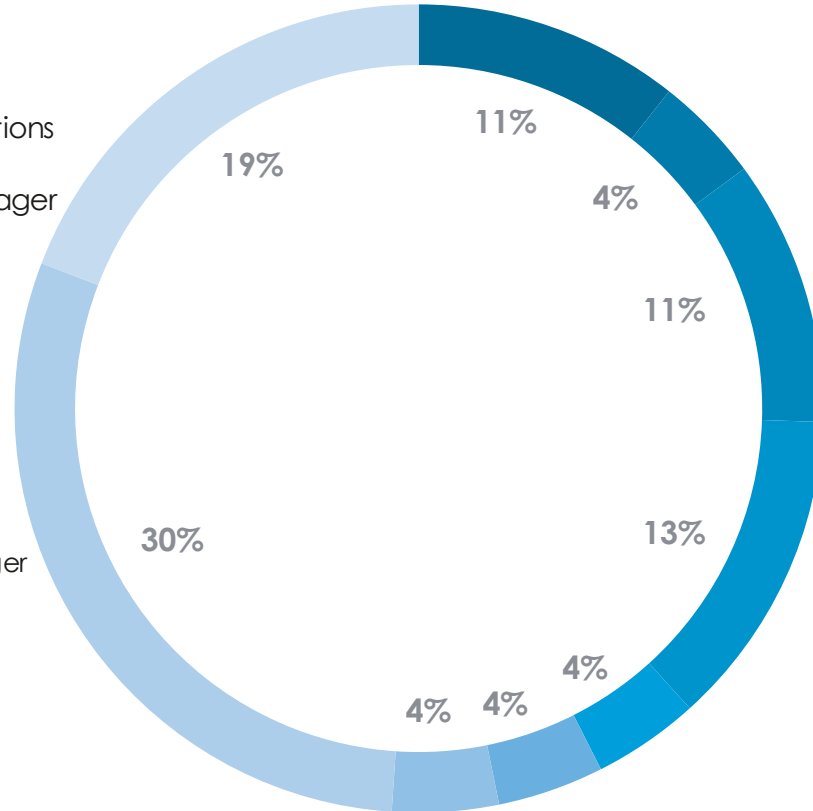
We will continue the project by starting a **Community of Practice** to work together on the questions that have been raised.



Who joined the project?

Jobs of participants

- Site GM
- Site Manager Operations
- Production Unit Manager
- Site HSE manager
- Site Process Safety
- VP Manufacturing
- MD
- Process Safety Manager
- HSE Manager



Participation by major oil companies and chemical companies with several production sites with Seveso regulations

Method

- 47 Interviews of 1 ½ hour
- + 22 Companies (see next slide)
- participation from The Netherlands (31), Belgium (4), Germany (4), France (4), Italy (1), Sweden (2), UK (1), US (1)

Participants of Cross Site Learning

AkzoNobel

ARLANXEO
Performance Elastomers

ARKEMA
INNOVATIVE CHEMISTRY

BASF
We create chemistry

chemelot
for today's future

DOW

DSM

DUPONT

EVONIK
POWER TO CREATE

ExxonMobil

FIBRANT
PURE CHEMISTRY SINCE 1952

NAM

NEPTUNE
ENERGY

OCI

سابک
sabik

preem

SOLVAY

Shell

TRONOX

TATA STEEL

Vopak

wintershall dea

What is top of mind?

We have summarized the research results in an intervention map.

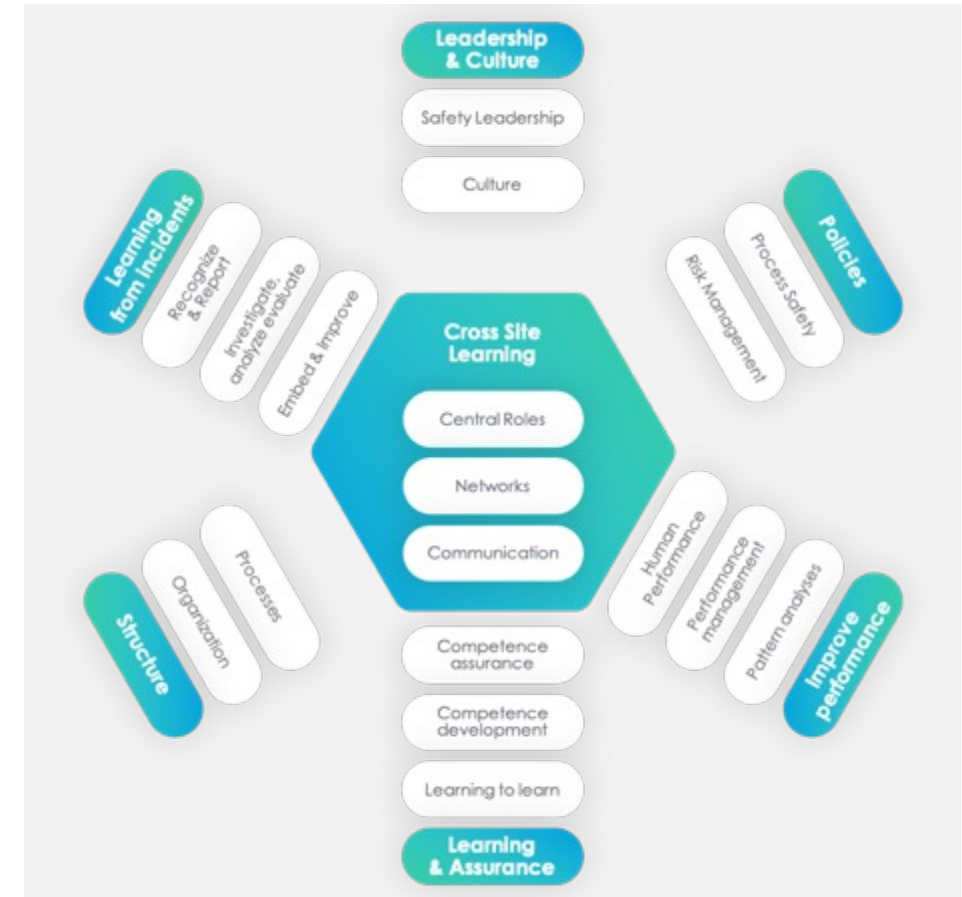
The next slides displays the intervention map in an interactive way.

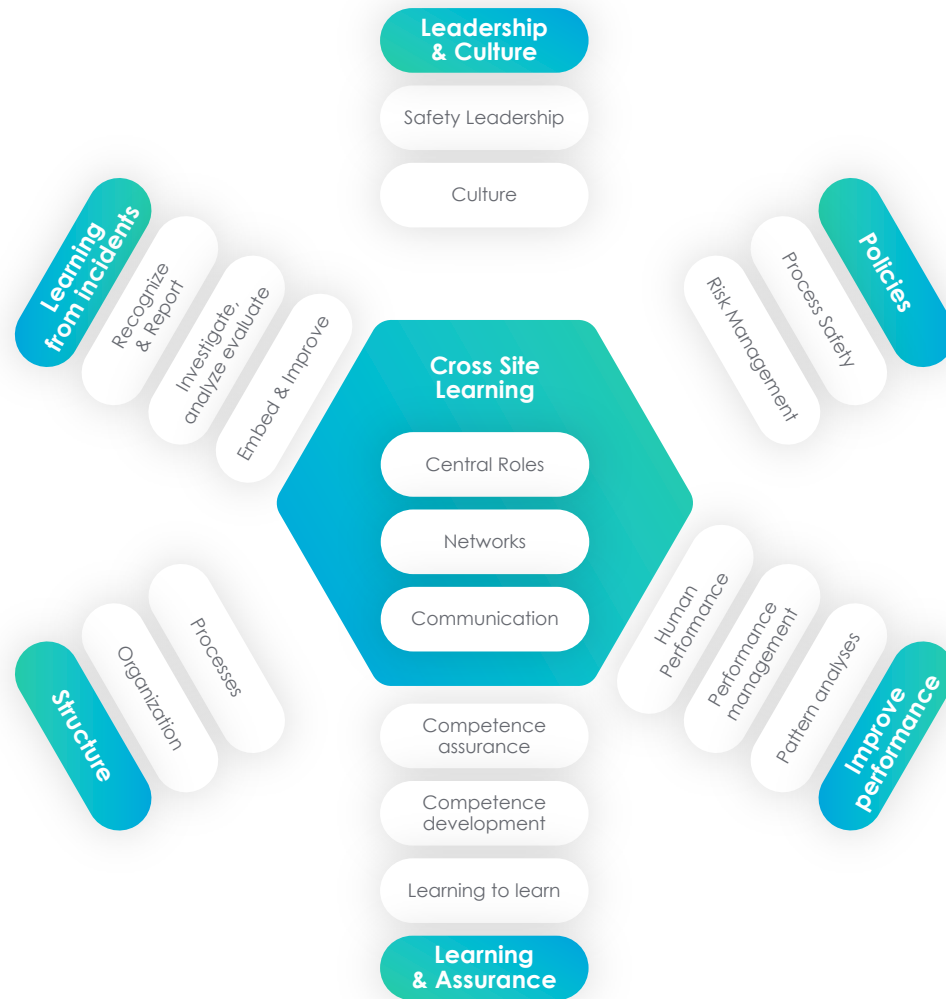
To use the animations

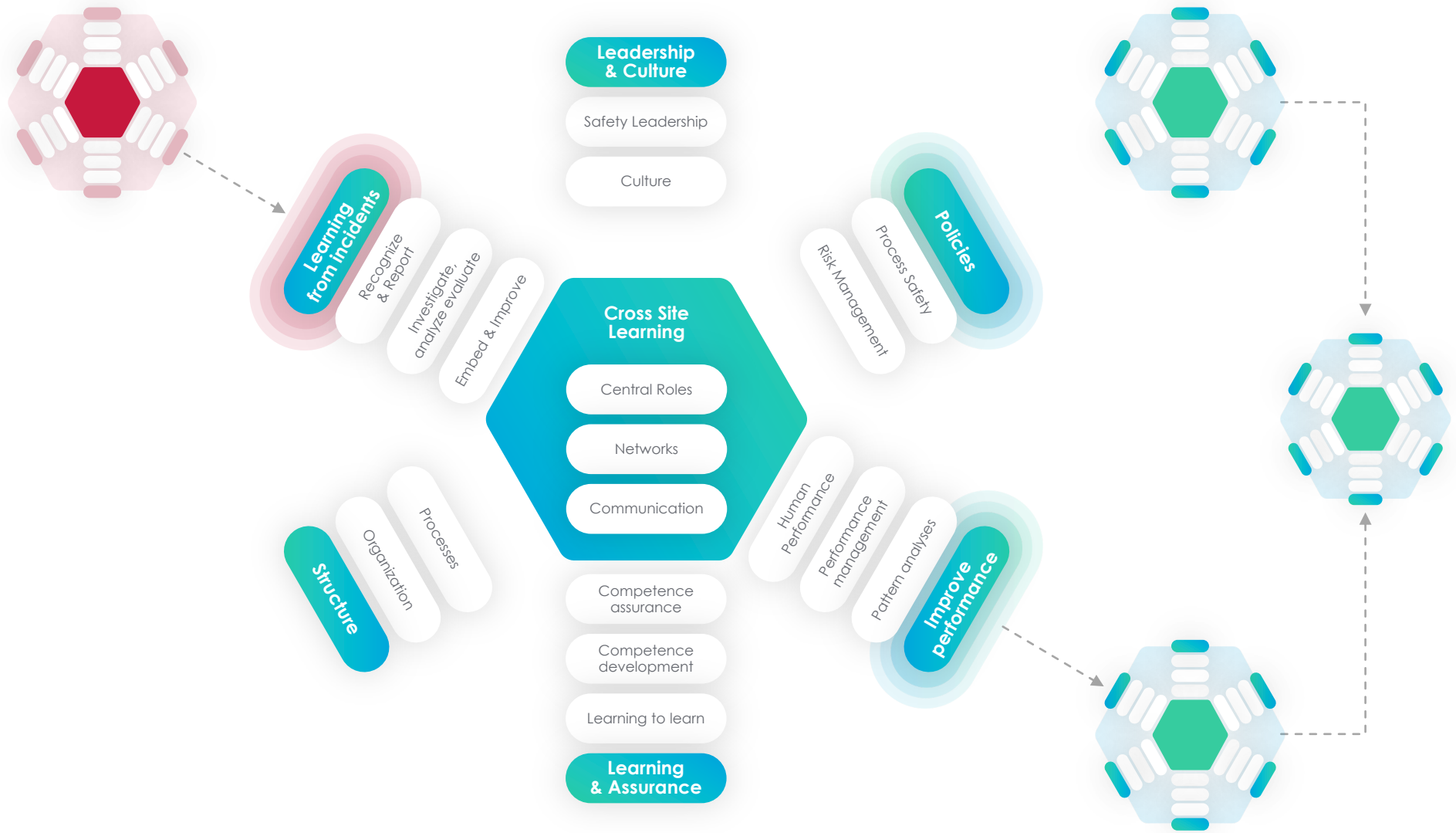
- Go to the **next slide**
- Click on the **theme** to go to the specific slide
- Click on **return** to go back



Intervention Map







Contents

1 Research findings

2 Benefits from using the intervention map

3 Join the next steps and participate in the community of practice

Apply the Intervention map

Examples where the intervention map can help you

- Decide what actions to take after an incident has been analysed
- You're about to develop a training for front-line leaders
- Regulations urge you to issue a new rule or procedure

Why use the intervention map?

Most of us are trained to solve problems and challenges by breaking them into pieces we can work on. It feels counter-intuitive to make problems bigger.

The intervention map triggers to find the coherence with other relevant parts of the process safety system. This will help to optimize forces of economic, workload and safety demands.



How to use the intervention map?

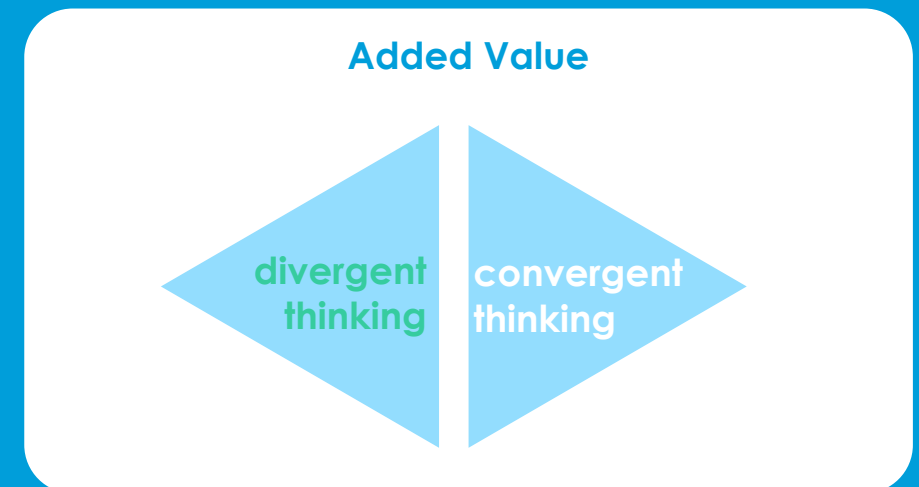
Step 1 Find the relevant questions for a specific situation

Step 2 Engage in a dialog with stakeholders to answer these questions together

Step 3 Evaluate objectives, risks, efforts from a whole systems perspective

Tips and tricks for dialog

- Appoint a facilitator to lead the process
- Stay with the facts, focus on a specific example
- Postpone judgements
- Build on each other's thinking
- Pay attention to what happens, listen carefully (slow down)
- Visualize the conversation by taking notes (as a group memory)



Contents

1 Research findings

2 Benefits from using the intervention map

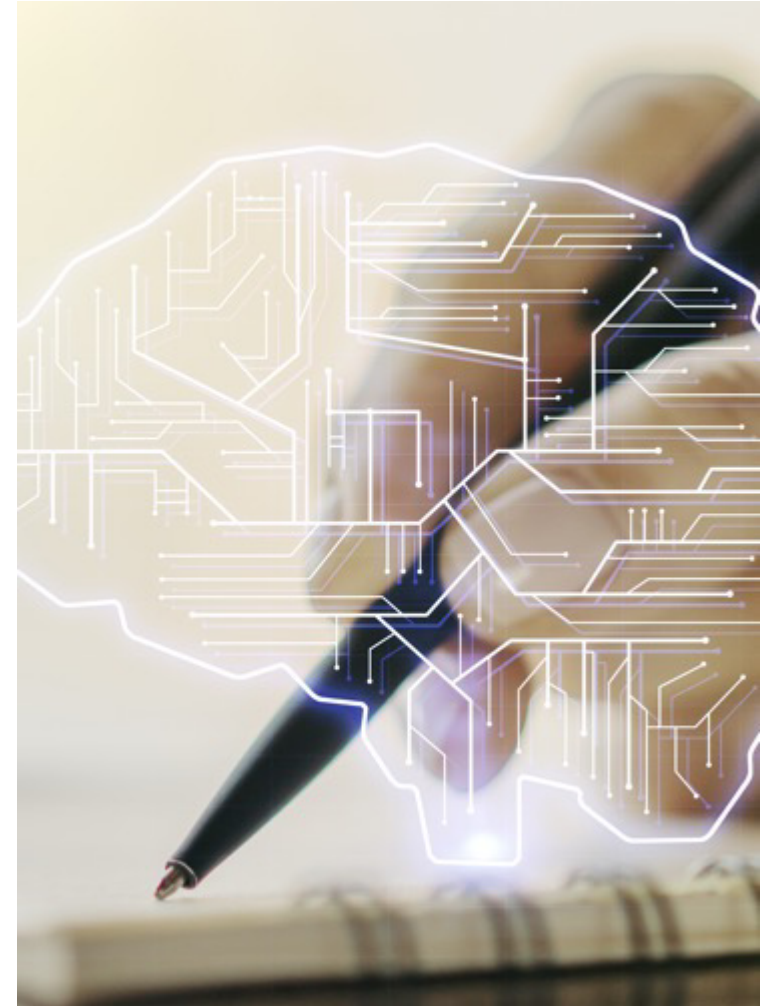
3 Join the next steps and participate in the community of practice

Join the next steps?

- Do you care to make a difference to process safety?
- Are you open to opportunities to make your organizations more resilient?
- Do you want to contribute to the challenges of the industry?

Raise your game on process safety

- The process safety community offers a space to meet with peers and cooperate on practical challenges





A place to meet and work with experts

Company
hub

Hub
theme

Company
hub



Community of practice

Join us with the next step

Participate in creating a prototype for social learning

Answer the key questions together

- Learn from other organizations
- Create and exchange of practical knowledge
- Find out who's the expert on the challenge you are grappling with

Online platform: privacy en diepgang

communityofpractice-processsafety.in.howspace.com

Norah Jones | Jazz | Blues | Playlist | Full Album | Greatest Hits | Music 2022 - YouTube

Community Of Practice | Demo - Community Of Practice - newbehavior.nl

Community Of Practice ▶ Learning From Incidents Community Network

working at Shell.
You can reach me at andre@newbehavior.nl

Andre

Dow

Evy Hanna Janna

Sabic

AS
Annejan

Perspectives we will cover along the journey

Learning From Incidents

Recognize and report Investigate and analyse Embed and improve

Makkelijk om snel de juiste collega te vinden

The screenshot shows a web browser window with the URL `communityofpractice-processsafety.in.howspace.com`. The page title is "Community Network | Demo - Community Of Practice - newbehavior.nl". The navigation bar includes "Community Of Practice", "Learning From Incidents", and "Community Network".

The main content area features the "COMMUNITY NETWORK" logo and the text: "Here you can get in touch, get inspiration and share experiences with peers." Below this, there are two blue header boxes for "Mix and Match" discussions:

- Mix and Match: Have you ever experienced an incident?**
- Mix and Match: We need help with the training of staff**

The first "Mix and Match" box is open, showing a search bar with "Search people..." and a list of recommendations based on the topic "Have you ever experienced an incident?". The recommendations are:

Name	Match Percentage
Coen	100% match
Janna	0% match
Chris	0% match
Hanna	0% match
Beatrijs	0% match
Annejan	0% match
Evy	0% match

The discussion content includes:

- A post by **Janna Admiraal** (Now edited): "Sure, there was a small leak because of a drain left unattended. We're lucky there was no source to ignite a fire." (Includes Like and Reply buttons)
- A post by **Evy Stevens** (Now edited): "Hi **Janna**, recognizable example. Can you tell me a little about it?" (Includes Like and Reply buttons)

Take out message

- This presentation offers an insight what themes and topics leading companies are working on
- And the questions the leaders ask before rolling up their sleeves
- At this stage only questions, no answers
- To deal with complex and fast changing challenges, we need to think differently, become more agile and imaginative
- Together we are able to face and respond to the rapidly evolving challenges of today



Stay safe

Contact

-  andre@newbehavior.nl
-  coen@newbehavior.nl
-  chris@newbehavior.nl
-  www.newbehavior.nl

