

# Occupied Building Risk Assessment

Gerold Kort  
May 15th, 2019  
**Open**



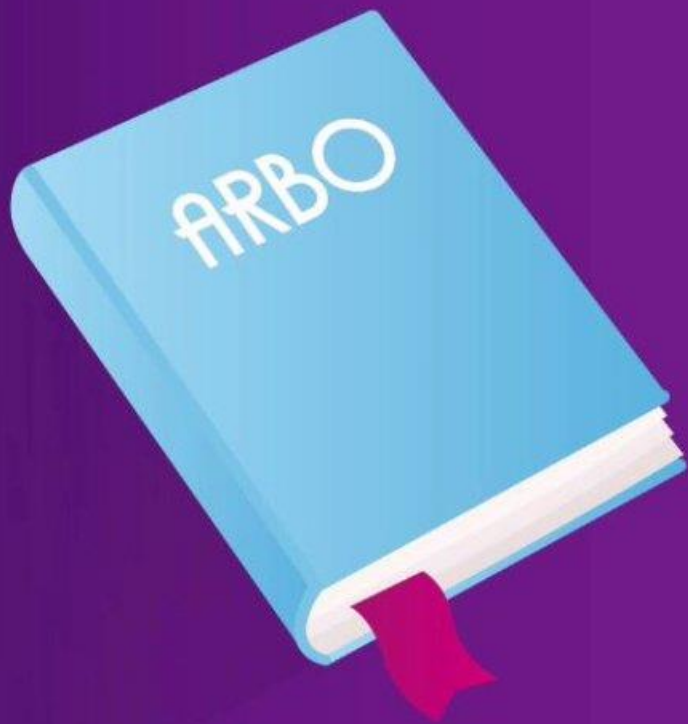












# Thematic Risk Assessment:

## Occupied Building Risk Assessment

or

**OBRA**



# Vinci



# VNCl guidelines is based on the following sources:

- Best practices (Dupont, Dow Benelux, Huntsman, Shell e.a.)
- 'Guidance for location and design of occupied buildings on chemical manufacturing sites'; Health and Safety Executive (HSE, UK); 2000.
- API Guidelines

# VNCl Guidelines

- Not obligatory
- Nothing more than a guideline (based on best practices)







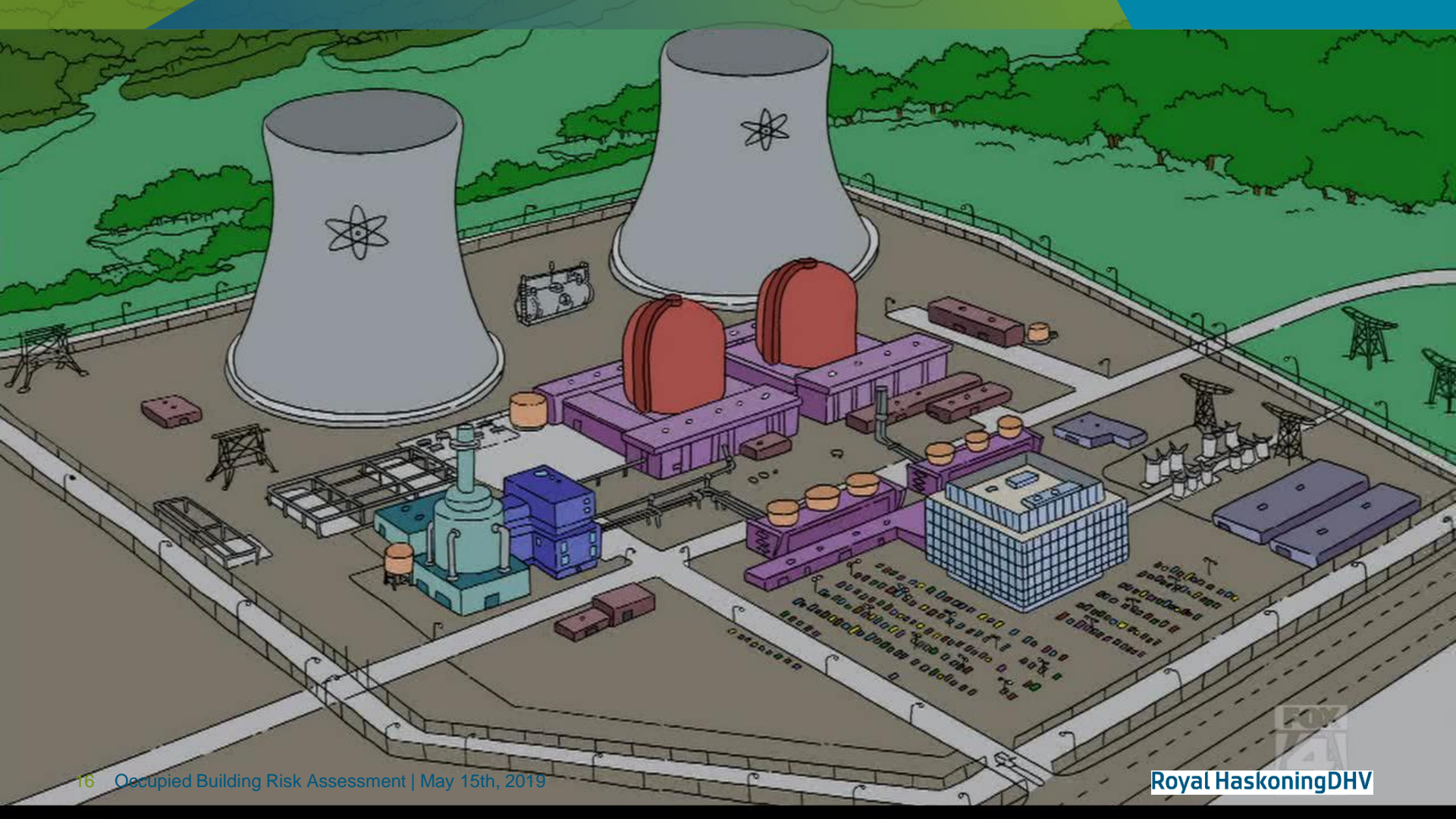






# When do you need an OBRA?

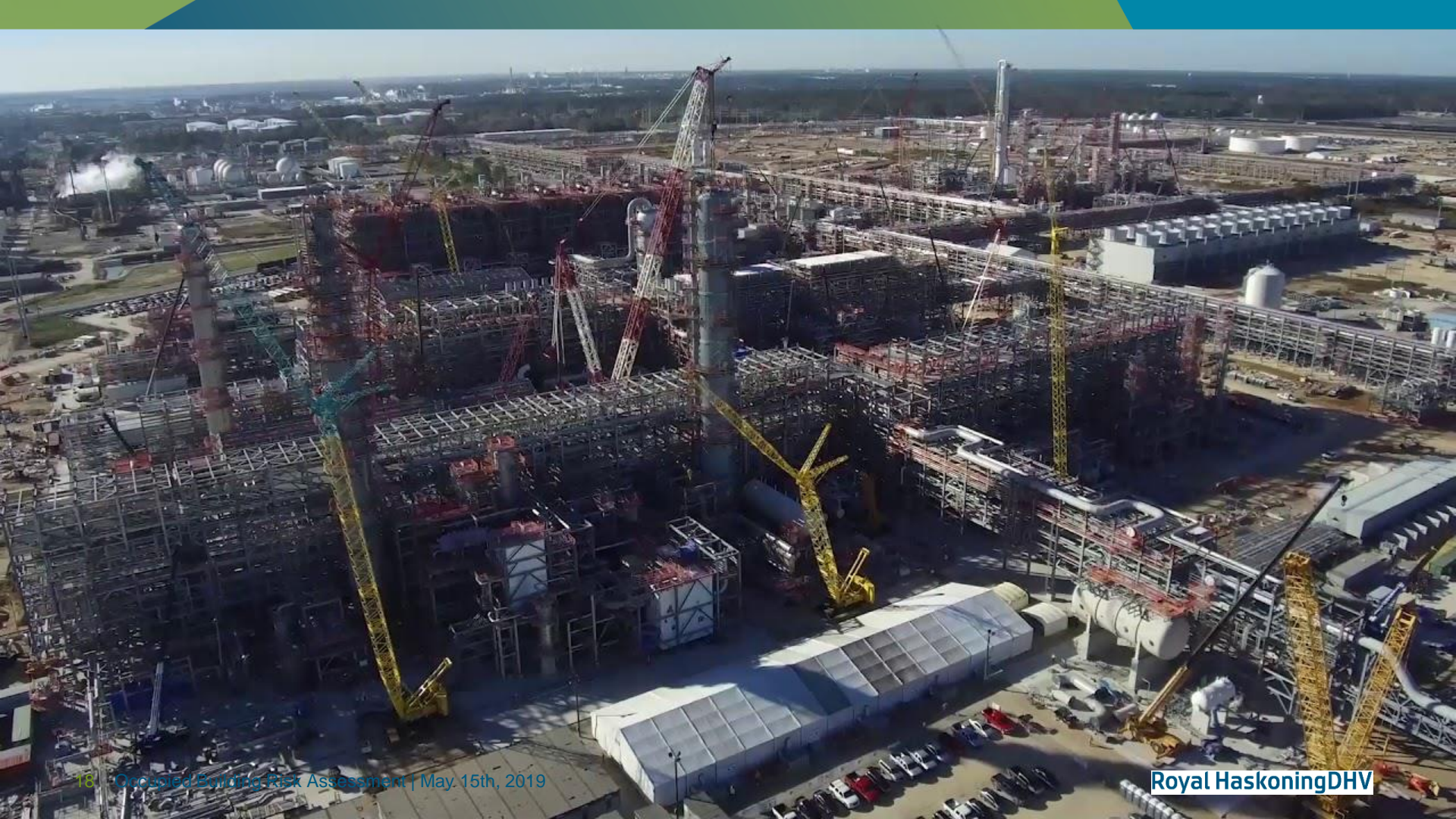












# General principles to manage risk:

1. Identify hazards and evaluate the risks (scenario's)
2. Place employees as far a possible
3. Minimize buildings
4. Minimize the use of buildings
5. Maximize the protection of buildings
6. Manage the use of buildings







# OBRA Results

1. It tells you how (un)safe you are in buildings
2. It tells you what you need to be safe (measures).
3. Compliance with legislation

